



3300 Walker Road, Windsor ON, N8W 3S1 | P: 519.969.9260 | F: 519.969.9156 | 1.855.969.9260 | www.itswin.com

**THE GOLD STANDARD IN COATING TECHNOLOGY**

**Predictable performance turn after turn**

**Easy wear identification to reduce waste of unused edges**

**Increases accuracy and output rate reliability, and delivers consistent tool life**

Maximize Edge Protection with **KCP25C**  
Featuring KENGold Coating Technology for Steel Turning Operations

**BACK BY POPULAR DEMAND!**

**SPECIAL OFFER\***

Valid February 12 - June 30, 2024

Insert Style	Negative	Promo Kit MM#	CAT #	End User Promo Price**
C - Rhomboid 80°		7083144	CNMG432MV	\$7.74
C - Rhomboid 80°		7083141	CNMG432RN	\$7.74
C - Rhomboid 80°		7083145	CNMG433MV	\$7.74
C - Rhomboid 80°		7083142	CNMG433RN	\$7.74
C - Rhomboid 80°		7083143	CNMG543RN	\$9.03
D - Rhomboid 55°		7083146	DNMG432MV	\$7.74

From cut taps to form taps, extended lengths to different coatings, EMUGE-FRANKEN, the inventor and leader of the high performance multi-purpose tap, offers the broadest line in the industry.

**EMUGE FRANKEN**

**RECEIVE AN EXTRA 5% OFF YOUR REGULAR COST**

NEW MultiTHREAD MILLS are ideal for job shops where part applications and materials frequently change. MultiTHREAD provides a versatile solution for many threadmaking requirements, enabling shops to boost their production and save on costs, as fewer types of thread mills need to be stocked in the tool crib.

**VARIABLE**  
BY WIDIA

**WIDIA**

INSERT & CUTTER BODY PROMOS

VARIABLE by WIDIA is a new tooling program that offers customers more ways to save while reducing tooling costs. Designed to be flexible, VARIABLE by WIDIA helps you save on steel costs based on the number of inserts you buy – the more inserts you buy the more you save. Find out about how you can take advantage of this program.

Promo Code: MVP4  
**BUY 10 OF THE SAME INSERT, GET A BEYOND™ EVOLUTION™ CUT-OFF BLADE FREE**

\*EXCLUDES BEYOND EVOLUTION THROUGH COOLANT BLADES

Promo Code: MVP5  
**BUY 20 OF THE SAME INSERT, GET A4 SQUARE SHANK TOOLHOLDER FREE**

\*EXCLUDES BORING BARS AND MODULAR SYSTEM

Promo Code: MVP13  
**BUY 20 OF THE SAME BEYOND EVOLUTION OR A4 INSERTS, GET 10 OF THE SAME INSERTS FREE**

\*ALL INSERTS FROM ONE PLATFORM

\*OFFERS VALID THROUGH MARCH/APRIL 2024 – WHILE QUANTITIES LAST\*  
\*PRICES SUBJECT TO CHANGE WITHOUT NOTICE | SOME RESTRICTIONS APPLY\*



## High Performance Reaming Solutions



\*Valid One Per Application

### REPLACEABLE HEAD STYLE

#### 9000 SERIES

Buy 3 heads, get a **FREE** mandrel and screw  
Ø 0.4646" - 1.5984" (11.80 mm - 40.60 mm)

- Features sintered carbide or cermet fixed diameter heads for H7 tolerance holes.
- Easy setup allows for minimal downtime for replacement.
- Improved TIR repeatability from head to head change.



#### 7000 SERIES

Buy 2 heads, get a **FREE** mandrel and screw  
Ø 0.4646" - 2.3858" (11.80 mm - 60.60 mm)

- Features an expandable version for improved dimensional accuracy and wear accommodation for high-production environments.
- Reconditions are available upon request.



### MONOBLOC STYLE

Buy 1 monobloc reamer, get 1 **FREE**

Ø 0.2283" - 1.2638" (5.80 mm - 32.10 mm)

- One-piece design ideal for hole diameters under 0.3780" (9.60 mm) and smaller production applications.
- Features diameter expansion to accommodate for wear and hold tight tolerances.
- Reconditions are available upon request.



## TENDO<sup>®</sup> Silver TENDO<sup>®</sup> E compact

Experience a low-cost entry into the world of hydraulic expansion technology

**BUY 5 TOOLHOLDERS  
GET ONE FREE**

Valid until March 31, 2024

Excellent vibration damping

Micro-blowouts are prevented, best work-piece surfaces, protection of the machine spindle, and increased tool life

As standard, fine-balanced

Suitable for high speeds of 50,000 RPM with a balancing grade of G2.5 at 25,000 RPM (depending on the mounting size of the spindle)

All commonly used shank types



Seamless compatibility

100% compatible with all commonly used machine tool mountings (HSK-A, JS-BT, SK)



TENDO Silver facilitate the easy entry into hydraulic expansion technology offering the best price-performance ratio in direct clamping.

The available seven interfaces makes the TENDO Silver to a reliable and precise toolholder for clamping all commonly used shank types, ensuring a dependable machining process.



## GÜHRING

### SYMMETRICAL DRILLING GEOMETRY

optimized for drilling and ramping operations excellent cutting edge stability

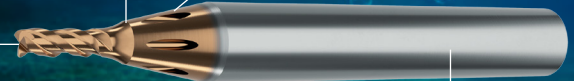
new transition geometry improves overall stability

GühroJet coolant ducts guided cooling & lubrication directly in the cutting area for effective chip removal

## MICRO d<sub>iver</sub> RF 100



innovative flute form very high tool stability low-vibration cutting



new ultra fine carbide optimum balance between hardness and toughness for micromachining applications

**MICRO EVO 2021 LUTION**

#### DIMENSIONS

Ø 1/32" - 1/8" .8mm - 3.0mm

#### LENGTHS

2.5 x D and 5 x D

#### THE HIPIMS COATING DUROX<sup>®</sup>

achieves a very high surface quality for optimal chip removal as well as protection against wear and oxidation in both wet and dry machining

Plunging and milling with only one tool. Outstanding performance across a wide range of materials. Extreme cutting values and very high cutting depths, which were previously not possible for micro-precision tools.



## TAPER CONICAL - NPT Hole Prep End Mill

NPT taper end mill to prepare the hole prior to tapping and thread milling. Reduces the amount of material the tap and thread mill remove. Tap cutting torque and thread mill cutting pressure are reduced for improved tool life and thread quality.



- > 1° 47' flute taper angle
- > Solid carbide
- > TiAlN-T21 coated for heat and wear resistance
- > 4 flutes
- > HA Cylindrical shank design
- > Contact Emuge-Franken for programming assistance if required

Part Number	NPT Size
3914A.037020	1/4" - 3/8" NPT Tapered Carbide End Mill
3914A.050020	3/8" - 1/2" - 3/4" NPT Tapered Carbide End Mill
3914A.075030	3/4" - 1" - 2" NPT Tapered Carbide End Mill



3300 Walker Road, Windsor ON, N8W 3S1 | P: 519.969.9260 | F: 519.969.9156 | 1.855.969.9260 | www.itswin.com

**DORMER** **PRAMET**

# VERSATILE SOLID CARBIDE DRILLS

The Economical Carbide Choice

**NEW**  
AVAILABLE IN APRIL



R003 & R023 stub and jobber length TiN tip drills



## NC Spot Drill

One tool performs multiple applications!

**BUY 10 INSERT GET 1 HOLDER**

**Free**



Insert Code	Part	Coating	Dmax.	Tmax.		Holder Code	Part	
013401	N9MT080208CT	NC40	TiN	10	4.5		603001	99616-10 Ø10
013402	N9MT080204CT	NC40	TiN				613001	99616-3/8 Ø3/8"
013403	N9MT080204CT	NC10	TiAlN					
014401	N9MT11T3CT	NC40	TiN	14	7		604004	99616-14 Ø16
014402	N9MT11T3CT	NC10	TiAlN				614002	99616-14 Ø5/8"

## OPTIMIZE MACHINE TOOL PERFORMANCE

SK Collet Chucks Designed for Accuracy & Precision

- 2 to 3x more gripping force than ER Collet Chucks
- T.I.R. less than 0.0002" at 4xD of the tool guaranteed
- Speeds up to 30,000 RPM
- Reduce cycle time, improve part quality, maximize tool life
- On-site demo available



Connect With Us!

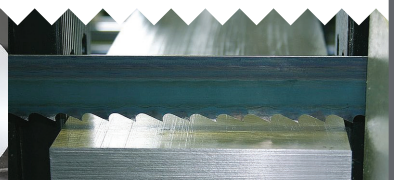
## When you need the right bandsaw blade | Wikus has you covered

**BIMETAL BAND SAW BLADES**  
The optimum product portfolio for standard and special applications

**CARBIDE BAND SAW BLADES**  
Very high cutting performance for increased productivity

**DIAMOND COATED BAND SAW BLADES**  
For special application, such as very hard, highly abrasive materials and alloys, natural stone and technical glass

**CARBON STEEL BAND SAW BLADES**  
For basic workshop operations



\*OFFERS VALID THROUGH MARCH/APRIL 2024 – WHILE QUANTITIES LAST\*  
\*PRICES SUBJECT TO CHANGE WITHOUT NOTICE | SOME RESTRICTIONS APPLY\*

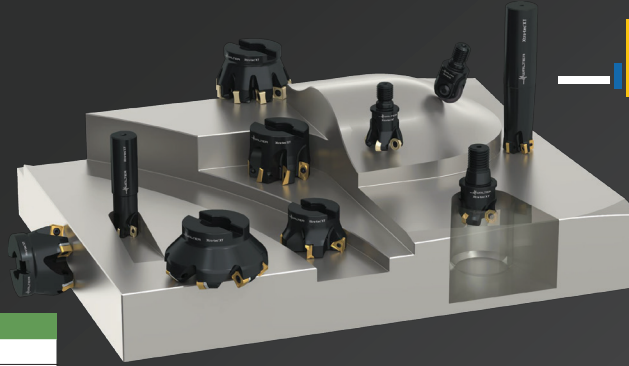


3300 Walker Road, Windsor ON, N8W 3S1 | P: 519.969.9260 | F: 519.969.9156 | 1.855.969.9260 | www.itswin.com

## Xtra-tec® XT

2024 Promotion

Performance and reliability extend your perspective.



Tiger-tec® Gold

Promotion Details

Get 75% off cutter bodies with insert purchase.

Use promo code XT2024



## OSG's A Brand AE-H Series

### Features & Benefits

- Variable indexing for suppression of cutting vibration and chattering
- Unique cutting edge geometry for stable machining of high-hardness steels up to 70HRC
- DUOREY Coating for outstanding performance and tool life



osgtool.com | 1-800-263-4861

SPECIAL OFFER

**\$1740** USD\*



## BIG KAISER EWN2-152 FINE BORING SET

Achieve high-performance accuracy with a guaranteed precision of .00005". This kit effortlessly covers a wide range of diameters from Ø.701" to 2.126". Don't miss out on this limited time offer to streamline your machining processes.



SCAN FOR MORE DETAILS

bigdaishowa.com > special offers



**THE RIGHT COOLANT  
MAKES ALL THE  
DIFFERENCE.**

Achieve cutting-edge operations with TRIM Cutting and grinding fluids.



**REQUEST A FREE  
COOLANT  
ASSESSMENT**

A metalworking fluid expert will provide you with a detailed analysis of fluid consumption, waste generation, downtime, and tool life review.

\*OFFERS VALID THROUGH MARCH/APRIL 2024 – WHILE QUANTITIES LAST\*

\*PRICES SUBJECT TO CHANGE WITHOUT NOTICE | SOME RESTRICTIONS APPLY\*